

# Step-by-Step Guide to “claiming” or registering a car

Follow these simple steps to register your MGA on the new online MGA Register UK.

## Step 1

Click here <https://www.mgaregisteruk.com/> to see the “Home Page”.

**THE MGA CLUB LTD**  
ABINGDON - ON - THAMES  
FOUNDED 1930

**The MGA Register**

Home Register Photos Contact

Home

Twin-Cam production files  
Please have a look at the files

My MGA' s  
Manage the details of your MGA online (login required)

Not a user yet?  
Click to here to register as a user

In depth overview of specific items to the MGA  
A thorough overview that gives detail

Search the register  
Enter chassis, body, engine or register number

Search

Last additions to the register

HDL13/63598 GHDL2/103452 GHD2/102948 GHD/83723 HMD13/44267 HDA43/14931 GHNL/73707 HDA43/10169

Click on any of the photos along the bottom of the frame to see the public view for the cars shown.

## Step 2

At this stage you can enter your chassis or engine number in the "Search the register" field to see what data already exists for your car. Alternatively you could enter the existing Register number if you know it. For all searches enter just the digits from your number. Here’s an example.

### Car details

(Last modified 2024-10-06 17:22:19 GMT +1)

Basics			
Prefix / Chassisnumber	GHD / 87282	Body colour	Iris Blue
Body number	B19146	Trim colour	Black
Condition	Roadworthy	Hood colour	
Status	Active	Type of wheels	Wire wheels
Model	1600	Register number	
Production period	Jan 1960 - Mar 1960	Registration date	20 August 2024
Engines			
Engine prefix	Engine number	Type	
16GAU	18497	Original	
Pictures			

# Step-by-Step Guide to “claiming” or registering a car

## Step 3

On the home page, where it says "Not a user yet?" click on the text "Click here to register as a user".



The screenshot shows the homepage of The MGA Register. At the top left is the logo for The MGA Car Club Ltd, Abingdon-on-Thames, founded in 1930. To the right of the logo is the text "The MGA Register". Below this is a green navigation bar with links for Home, Register, Photos, and Contact. The main content area is titled "Home" and contains several sections. On the left, there is a section for "Twin-Cam production files" and "My MGA's", with a link "Click to here to register as a user" highlighted by a red arrow. On the right, there is a search section titled "Search the register" with a text input field and a "Search" button. Below these sections is a "Last additions to the register" section featuring a row of eight small images of cars, each with a license plate number below it: HDL13/63598, GHDL2/103452, GHD2/102948, GHD/83723, HMD13/44267, HDA43/14931, GHNL/73707, and HDA43/10169.

## Step 4

Clicking this link will take you to the account registration page which looks like this.

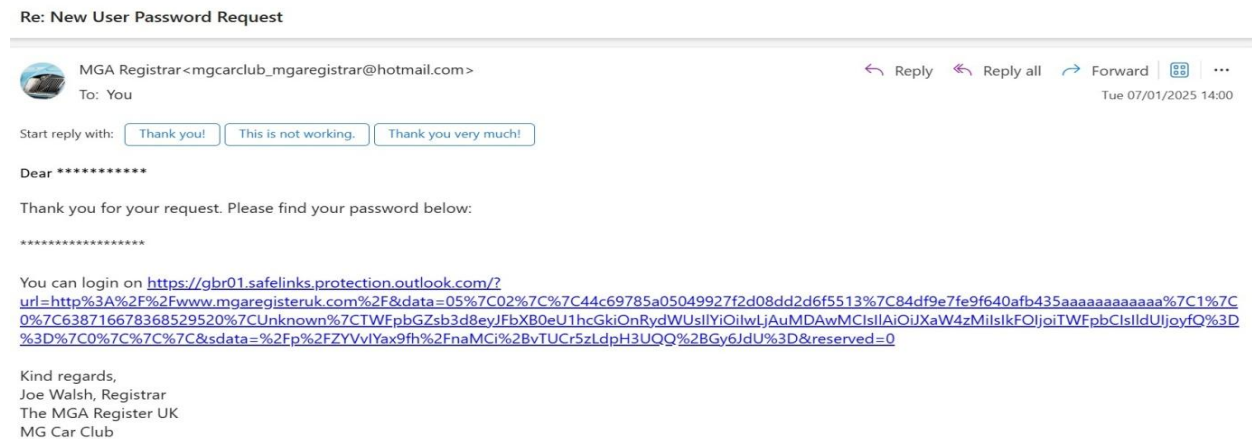


The screenshot shows the account registration page. At the top is a green navigation bar with links for Home, Register, Photos, and Contact. Below this is the heading "Create an account to register your MGA". The registration form consists of several fields: First Name (John), Last Name (Smith), Address (1 No Way), Postal code (XP1 1XP), City (Watford), Province / State (Hertfordshire), Country (Great Britain (GB)), Email address (jmith@ukonline.co.uk), and Telephone (088441778899). A "Register" button is located at the bottom right of the form.

Enter your personal details on this page to create a personal account.

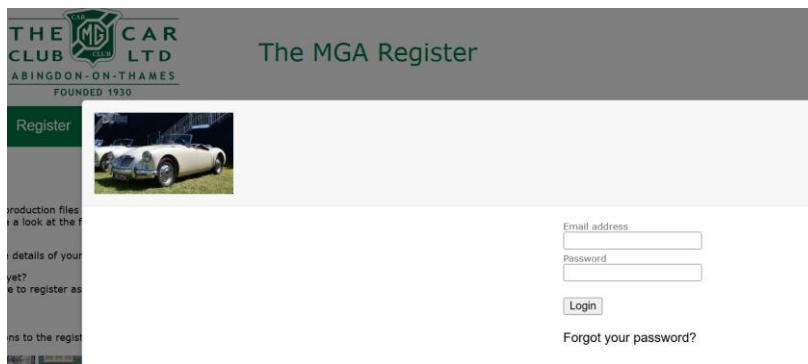
# Step-by-Step Guide to “claiming” or registering a car

You will then receive an email similar to this.



## Step 5

Click the link in the email, this will open the login screen:



Enter the new password and then go to “My personal details” to create a new password. Then return to the “Home” page and under "My MGAs" click on the text "Manage the details of your MGA on line". Like this....





# Step-by-Step Guide to “claiming” or registering a car

## Step 6 contd....

Click on the photo of your car or, if there is no photo click on the engine number and you will be taken to the “private view” of the “Car details” page. You can now change, update or edit the details of your MGA to ensure the record on the Register is up to date and accurate, eg. “*Edit Basic data*” or “*Edit engine details*”. If you have a Heritage Certificate there is an option to add this to the record for future reference. Nb. The “Production record” section is a validated record of how the car left the factory and can only be edited by the Registrar based on verifiable evidence eg a Heritage Certificate or a scan of the original RF60 log book.

You can now add further details using the owner assessable fields. If your car does not have a photo now is a good time to add one. When you've requested the changes you want you can log out. Once the changes have been approved you will receive a confirmation email.

**NB** – At each stage there might be a delay between entering your information and the database updating. Having completed the process of "claiming" your MGA all the data held on the database about your car is now visible to you as the current owner. **NOTE - Only the registered owner of the car (and the Registrar/administrator) can see this level of detail.** Anyone else will see only the basic data you were able to see when you clicked on one of the pictures in Step 1 regardless of whether or not they are a registered user.

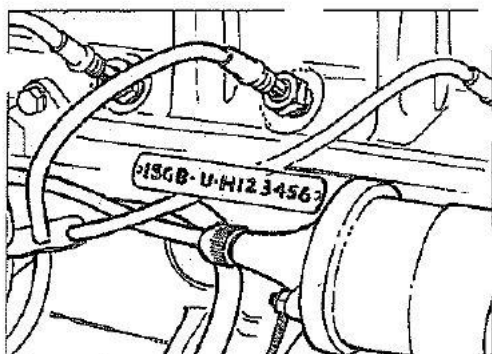
If you have any questions or any issues registering as a user or "claiming your MGA" please contact me. I would be particularly interested in hearing from you if your MGA is not already listed on the database.

Joe Walsh

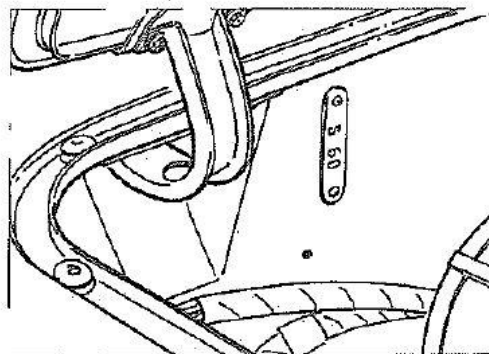
**Registrar – The MGA Register UK**

[mgsclub\\_mgaregistrar@hotmail.com](mailto:mgsclub_mgaregistrar@hotmail.com)

**Where to find identification marks:**



Engine number. This is stamped on a plate on the right hand side of the cylinder block



Body number. Stamped on a plate secured to the right hand side of the dash panel